

# OPERATING INSTRUCTIONS

## Power Recline and Light Switch Control

MODEL: **XX-RLS**



### **Power Recline**

Press arrow keys to open or close recline position.

### **Light Switch**

Press once to turn on light strip and press again to turn off.

### ***Notes:***

- Use only the power supply furnished with the unit.

## IMPORTANT SAFETY INSTRUCTIONS

WARNING: To reduce risk of burns, fire, electric shock, or injury to persons:

- READ INSTRUCTIONS BEFORE USING
- BURNS WILL RESULT FROM IMPROPER USE
- NEVER REMOVE COVERS

IMPORTANT: Patients using a pacemaker should consult a physician prior to use.

This appliance should never be left unattended when plugged in. Unplug from outlet when not in use, and before putting on or taking off parts.

Close supervision is necessary when this unit is used by, on, or near children, invalids, or disabled persons.

Use this unit only for its intended use as described in this manual. Do not use attachments not recommended by the manufacturer. Keep the cord away from heated surfaces. Do not use outdoors.

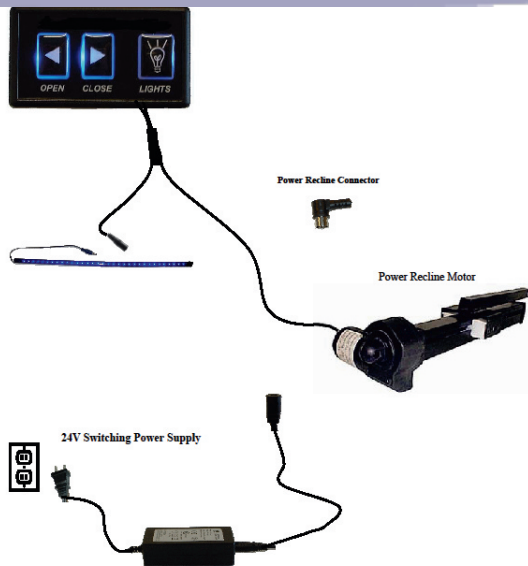
Do not operate where aerosol (spray) products are being used or where oxygen is being administered.

Never operate this appliance if it has a damaged cord or plug, if it is not working properly, if it has been dropped or damaged, or dropped into water. Return the appliance to a service center for examination and repair.

To disconnect, turn all controls to the off position, then remove plug from outlet.

**SAVE THESE INSTRUCTIONS**

## SYSTEM DIAGRAM POWER RECLINE - TRAY MOUNT



## *XX-RLS* OPERATING INSTRUCTIONS



### **DANGER - TO REDUCE RISK OF ELECTRIC SHOCK:**

Always unplug the unit from the electrical outlet immediately after using.

Do not reach for an appliance that has fallen into water. Unplug immediately.

Never use pins or other metallic fasteners with this appliance.

Carefully examine the covering before each use. Discard the appliance if the covering shows any sign of deterioration, such as checking, blistering, or cracking.

Keep dry - Do not operate in a wet or moist environment.